

# CertainTeed

# Certa-Lok Yelomine™

## Specifications & Dimensions

### Restrained Joint PVC Pressure Piping System

#### GENERAL INFORMATION

CertainTeed's Certa-Lok™ Yelomine™ Restrained Joint PVC Pressure Pipe meets the performance requirements of ASTM D2241 "Standard Specification for Poly (Vinyl Chloride) (PVC), Pressure Rated Pipe (SDR Series)."

Certa-Lok Yelomine pipe and couplings are manufactured from a specially formulated PVC compound that **contains impact modifiers and ultraviolet inhibitors to give higher impact strength over an extended period of time.** CertainTeed Certa-Lok Yelomine compound meets or exceeds cell classification 12454 per ASTM D1784.

The Certa-Lok system provides a noncorrosive restrained joint by utilizing precision-machined grooves on the pipe and in the

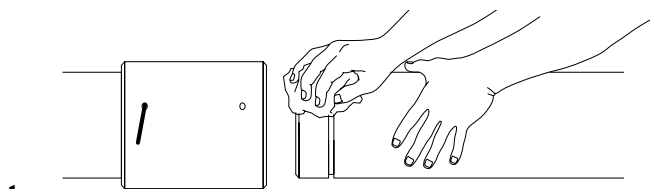
coupling which, when aligned, allow a spline to be inserted, locking the pipe and coupling together. A flexible elastomeric seal (O-ring) in the coupling provides a hydraulic seal.

Certa-Lok Yelomine couplings are boxed and shipped including splines and factory installed O-rings (gaskets). Note: Specify permanent or non-permanent joint when ordering.

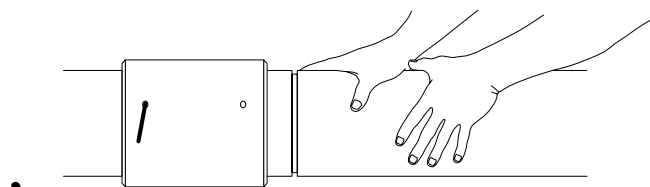
Certa-Lok Yelomine joints meet the requirements of ASTM D3139 "Joints for Plastic Pressure Pipes Using Flexible Elastomeric Seals."

O-rings meet the requirements of ASTM F477 "Standard Specification for Elastomeric Seals (Gaskets) for Joining Plastic Pipe."

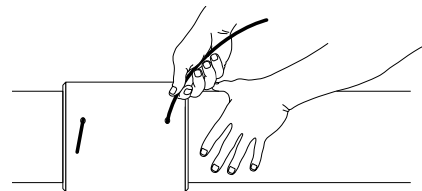
#### JOINT ASSEMBLY



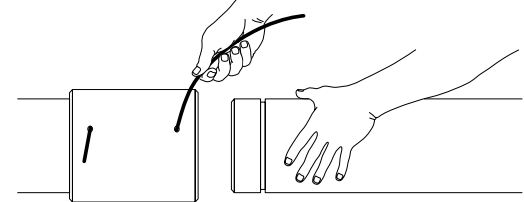
**1**  
Clean joining surfaces.



**2**  
Align and insert pipe into Certa-Lok coupling and push home. When the pipe end seats against the coupling stop, the locking grooves are automatically aligned for spline insertion.



**3**  
The spline is then inserted through the insertion hole in the coupling, until it is fully seated. This securely locks the coupling to the pipe. The gasket provides a hydraulic seal.



**4**  
When needed, the joint can be disassembled and reused.

**IMPORTANT:** For pipe sizes 2" through 6", using non-perm rings, CertainTeed recommends using lubricant when assembling the joint. Pipe sizes 8" and above (non-perm), and all sizes using perm rings, require lubricant to assemble. CertainTeed supplies sufficient lubricant to join the pipe. When using lubricant, apply a small amount to the rubber rings and pipe ends. Note: Specify permanent or non-permanent joint when ordering.

**NSF-INTERNATIONAL LISTINGS**

It should be noted that the NSF-14 establishes minimum physical, performance, health effect, quality assurance, marking and record keeping requirements for plastic piping products. Similarly, NSF-61 specifically covers requirements pertaining to the environmental aspects of piping used for potable drinking water. A potable drinking water product that has an NSF-14 listing must (by default) also have an NSF-61 listing. In contrast, a product that is NSF-61 listed (for use in potable water applications) may not necessarily have an NSF-14 "performance specification" listing.

Certa-Lok Yelomine restrained joint pipe and couplings up to class 250 PSI are listed under NSF-14 and include compliance with NSF-61 for potable water applications. Concurrently, Certa-Lok Yelomine restrained joint PVC and coupling class 315 PSI, Certa-Lok Yelomine Integral Bell pipe and 16" fiber-wound couplings are listed under NSF-61 only (in compliance with general market and application usage requirements).

Independent laboratory test data pertaining to all listings and certifications is available upon request.

**CERTIFICATION OF QUALITY**

- 1) The Yelomine formulation will contain sufficient impact modifier to demonstrate approximately twice the Izod impact level of conventional white PVC pipe, and shall meet or exceed the below listed plant production specifications.
- 2) The Yelomine formulation will contain a sufficient amount of high-purity TiO<sub>2</sub> to prevent surface discoloration and to provide superior long-term UV protection against impact strength degradation.
- 3) All Certa-Lok YELOMINE pipe will be manufactured at CertainTeed's Lodi, California, and McPherson, Kansas extrusion plants. All fabricated fittings will be manufactured at CertainTeed's McPherson, KS, fabrication facility.

**PIPE IMPACT PRODUCTION SPECIFICATIONS**

NOM. SIZE (IN.)	SDR 32.5 (FT-LBS.)	SDR 26 (FT-LBS.)	SDR 21 (FT-LBS.)	SDR 17 + 13.5 (FT-LBS.)
2"	—	—	—	170
3"	—	—	—	245
4"	—	210	255	320
6"	250	305	380	470
8"	300	400	495	610
10"	350	500	530	—
12"	400	500	530	—
14"	—	500	530	—
16"	—	500	530	—

**NOMINAL PROPERTY VALUES**

PIPE PROPERTY	TEST METHOD	VALUE
Izod Impact	ASTM D256	1.15 ft.- lbs./ in. of notch
Tensile Strength	ASTM D638	7,000 psi
Modulus of Elasticity	ASTM D638	400,000 psi
Deflection Temperature	ASTM D648	158°F
Flammability	ASTM D635	Self-Extinguishing

**NON-PERMANENT USE AND PERMANENT USE CERTA-LOK JOINTS**

Certa-Lok Yelomine pipe and fittings have been successfully servicing the industry for many years. In order to enhance performance and better accommodate customer needs, CertainTeed offers two types of Certa-Lok Yelomine...Permanent Use and Non-Permanent Use. Non-Permanent O-rings have a slightly reduced cross-section for easy assembly and disassembly. Permanent Use O-rings have a slightly larger cross-section and are not designed for disassembly. Permanent Use Certa-Lok Joint requires lubricant to assemble, which is supplied in sufficient quantities by CertainTeed.

**NON-PERMANENT USE CERTA-LOK JOINT**

Non-Permanent Use Certa-Lok Joints, which utilize a Teflon coated O-ring, are typically used in above-ground, exposed installations such as mining, irrigation, temporary bypass or slurry lines or any installation that will require disassembly and reuse.

**CAUTION:** *Non-Permanent Use Certa-Lok joints should not be used in buried or submerged applications.*

**PERMANENT USE CERTA-LOK JOINT**

Permanent Use Certa-Lok Joints utilize a Teflon-coated O-ring with a slightly larger cross-section. The joint assembles easily with lubricant. Disassembly can be achieved, but can be extremely difficult depending on the diameter of the piping system.

Permanent Use Certa-Lok Joints are intended for use in all installations which do not require disassembly during the service life of the system. Applications include buried installations, bridge, river and road crossings, and all installations in which joints are subjected to long-term or excessive misalignment due to external loads. CertainTeed supplies sufficient lubricant for Permanent Use Certa-Lok Joint installations.

If in doubt as to which coupling system, Non-Permanent or Permanent Use, is best suited for your application, contact your local CertainTeed distributor or CertainTeed Territory Sales Manager.

## PIPE GROOVING INSTRUCTIONS

### CERTA-LOK YELOMINE RESTRAINED JOINT

**CAUTION:** Unplug router before removing or inserting bits. Always wear eye protection. Support the pipe near the end to be grooved.

**CAUTION:** Certain products are factory end-thickened and should not be cut and re-grooved. See page 4, Note 3.

## PREPARATION

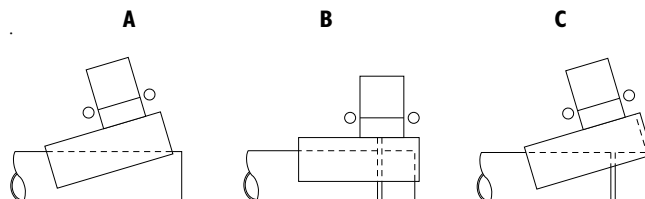
The pipe must first be cut square, to ensure that the spline groove will align properly with mating grooves in the Certa-Lok Yelomine Coupling. Check with a square.

## APPLICATION

- 1) Select and install the proper bit for conformance with the groove dimensions shown. The bit must be tightly secured in the router, and the router must be tightly fastened to the jig. Use the black plastic spacer under the router to achieve motor support.

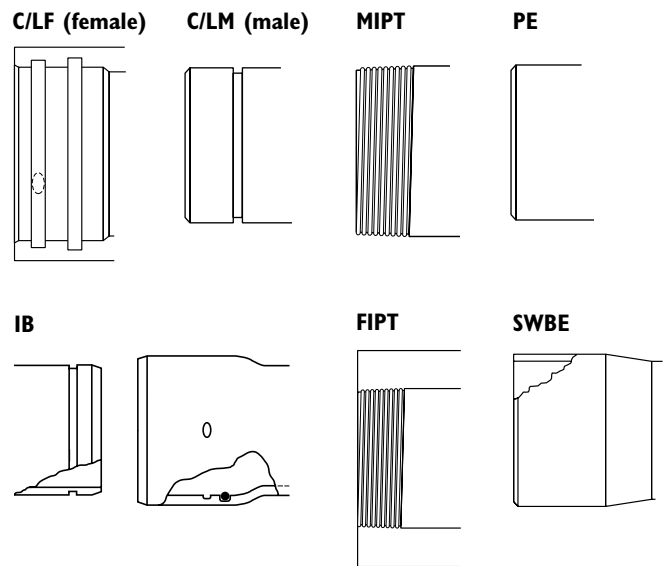
PIPE SIZE	GROOVE WIDTH (IN.)	GROOVE DEPTH (IN.)	BEVEL LENGTH (IN.)
4"	0.375	.135	$\frac{3}{16}$ ( $\frac{1}{4}$ IB)
6"	0.375	.135	$\frac{5}{16}$ ( $\frac{1}{4}$ IB)
8"	0.500	.145	$\frac{5}{8}$
10"	0.500	.215	$\frac{5}{8}$
10" IRR	0.500	.145	$\frac{5}{8}$
12"	0.750	.215	$\frac{5}{8}$
12" IRR	0.500	.145	$\frac{5}{8}$
14"	0.500	.215	$\frac{5}{8}$
16"	0.750	.215	$\frac{5}{8}$

- 2) Make short trial cuts on a scrap piece of pipe before grooving the line pipe.
- 3) Turn router on, hold handles firmly, and set the jig on the pipe with the rear slide bar and forward guide post resting on the pipe (figure A). Slide the jig toward the pipe and maintain pressure against the pipe end with the forward guide post (figure B). Move the jig slowly and firmly clockwise around the pipe, or better, rotate the pipe to achieve the same motion. Best results are obtained when the jig is held on the top of the pipe with the pipe to your right, and the pipe is rotated slowly towards you.
- 4) To remove the jig, tilt the guide post end up while maintaining contact with the pipe end (figure C). This prevents the cutter from ruining the groove by gouging the sides
- 5) Bevel pipe end.



## DEFINITIONS & ABBREVIATIONS

C/L	Certa-Lok™
C/LM	Certa-Lok Grooved (male) Pipe End
FIPT	IPS (female) Pipe Thread (NPT)
SW	Solvent Weld
C/LF	Certa-Lok Gasketed (female)
MIPT	IPS (male) Pipe Thread (NPT)
SWBE	Solvent Weld Bell End
PE	Plain End
HP	High Pressure
IRR	Irrigation
DT	Double Tapped
IB	Integral Bell
SMG	Standard Metal Groove



## FLEXIBILITY

Certa-Lok Yelomine can bend easily around many obstructions, typically reducing the number of fittings required. The pipe **should not** be bent to a lesser (tighter) radius than shown.

PIPE DIA.	MIN. R. CURVATURE (FT.)	OFFSET/ 20 FT. (IN.)
2"	60	40
3"	90	27
4"	100	24
6"	150	16
8"	200	12
10"	250	10
12"	300	8
14"	350	7
16"	400	6

**NOTE:** Values shown are for pressure-pipe applications. Tighter bend radii are typically allowed for non-pressure applications.

**YELOMINE INTEGRAL BELL (IB) PIPING PRODUCTS**

Gasket (O-ring) and Spline included

SIZE (IN.)	PSI	SDR	OD	BOD	P	C	MIN. WALL	APP.WT. (LBS./FT.)	NON-PERM PART NO.	PERM PART NO.
4"	200	21	4.500	5.11	¼	3.00	.214	1.89	266225	266324
4"	250	17	4.500	5.27	¼	3.00	.265	2.29	266218	266317
6"	200	21	6.625	7.50	¼	3.00	.316	4.07	266249	266348
6"	250	17	6.625	7.74	¼	3.00	.390	4.94	266232	266331
8"	200	21	8.625	9.75	2½/32	3.16	.410	6.72	266379	266362

**CERTA-LOK YELOMINE PIPE**

WITH COUPLINGS

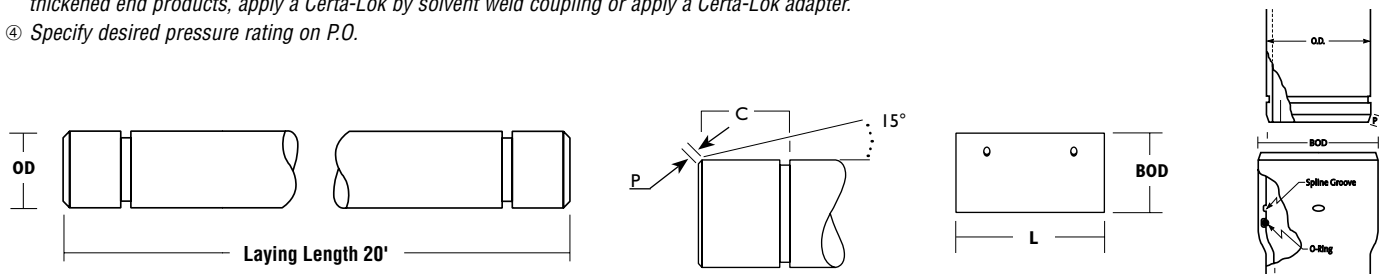
Certa-Lok Coupling, Gaskets (O-ring) and Spline included

SIZE (IN.)	PSI	SDR	OD	BOD	L	P	C	MIN. WALL	WT. (LBS./FT.)	PART NO.
2" ③	250	17	2.375	3.20	5.25	⅜	1.75	.140	0.69	216213
3" ③	250	17	3.500	4.38	7.25	⅜	2.50	.206	1.48	217210
4" ③	200	21	4.500	5.47	8.25	⅜	3.00	.214	2.11	226212
4"	250	17	4.500	5.47	8.25	⅜	3.00	.265	2.50	218217
4" HP ③	315	13.5	4.500	5.96	8.25	⅜	3.00	.333	3.10	250217
6" ③	125	32.5	6.625	7.84	8.25	⅝	3.00	.204	2.99	243219
6"	160	26	6.625	7.84	8.25	⅝	3.00	.255	3.58	235214
6"	200	21	6.625	7.84	8.25	⅝	3.00	.316	4.30	227219
6"	250	17	6.625	7.84	8.25	⅝	3.00	.390	5.18	219214
6" HP ③	315	13.5	6.625	8.37	8.25	⅝	3.00	.491	6.59	251214
8"	125	32.5	8.625	10.19	10.13	⅝	3.16	.265	5.00	244216
8"	160	26	8.625	10.19	10.13	⅝	3.16	.332	6.07	236211
8"	200	21	8.625	10.19	10.13	⅝	3.16	.410	7.26	228216
8"	250	17	8.625	10.95	10.13	⅝	3.16	.508	8.71	220210
8" HP ③	315	13.5	8.625	10.95	10.13	⅝	3.16	.639	11.30	237218
10" ②	125	32.5	10.750	12.44	12.13	⅝	3.50	.331	7.97	245213
10"	160	26	10.750	12.44	12.13	⅝	3.50	.413	9.73	214219
10"	200	21	10.750	12.44	12.13	⅝	3.50	.511	11.60	230219
12" ②	125	32.5	12.750	14.65	12.13	⅝	3.50	.392	11.11	246210
12"	160	26	12.750	14.65	12.13	⅝	3.63	.490	13.63	215223
12"	200	21	12.750	14.65	12.13	⅝	3.63	.606	16.21	239229
14"	160	26	14.000	16.00	12.13	⅝	3.50	.538	14.70	247217
14"	160 ①	21	14.000	16.00	12.13	⅝	3.50	.666	18.03	247200
16"	90 ①	26	16.000	17.40	12.13	⅝	3.61	.615	20.37	248214 ④
16"	160	26	16.000	17.22	12.00	⅝	3.61	.615	20.22	248214 ④
16"	200	21	16.000	17.22	12.00	⅝	3.61	.762	24.85	248337

Laying length on Yelomine IB and Yelomine is 20'.

Note: All dimensions are in inches and are subject to normal manufacturing tolerances (all charts in this brochure).

- ① PSI on this item is limited by the pressure rating of the coupling.
- ② 10" and 12" Irrigation Couplings required on Class 125 pipe.
- ③ These products are produced with thickened ends to accommodate the Certa-Lok groove while maintaining their designed pressure rating. NOTE: Grooving the non-thickened pipe body will result in less-than-designed pressure rating for the new joint and ultimately the entire system. When fabrication is required for thickened end products, apply a Certa-Lok by solvent weld coupling or apply a Certa-Lok adapter.
- ④ Specify desired pressure rating on P.O.



### CERTA-LOK YELOMINE COUPLING

COMPLETE WITH SPLINES AND O-RINGS

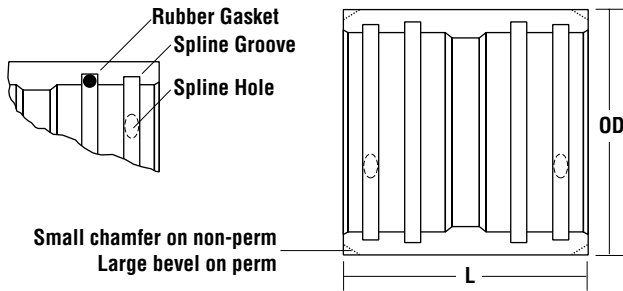
SIZE (IN.)	PSI	L (IN.)	WT./PC. (LBS.)	OD (IN.)	PART NO. NON PERM. USE	PART NO. PERM. USE
2"	250	5.25	1.05	3.20	705021	715020
3"	250	7.25	2.17	4.38	705038	715037
4"	250	8.25	4.92	5.47	705045	715044
4" HP	315	8.25	5.00	5.96	745034	—
6"	250	8.25	6.20	7.84	705069	715068
6" HP	315	8.25	10.40	8.37	745041	—
8"	250	10.13	10.93	10.19	705076	715075
8" HP	315	10.13	20.00	10.95	745058	—
10"	200	12.13	21.70	12.44	705106	715105
10" IRR ①	125	12.13	21.70	12.44	740619*	—
12"	200	12.13	28.80	14.65	716669	716652
12" IRR ①	125	12.13	28.80	14.65	740626*	—
14"	160	12.13	40.00	16.00	745010	745218
16" ②	90	12.13	30.00	17.40	745027	745225
16" ③	200	12.00	27.00	17.22	745416	745409

\* dual spline hole

① 10" and 12" Irrigation Couplings required on Class 125 Pipe.

② PVC, 16"

③ Composite 16"



### CERTA-LOK YELOMINE O-RING

NON-PERMANENT USE

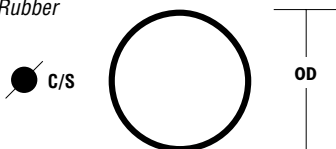
Teflon coated for easy assembly

No lubricant required to assemble 2"-4"

SIZE (IN.)	C/S (IN.)	MATERIAL	OD (IN.)	PART NO.
2"	.210	NBR	2.770	861215
3"	.210	NBR	3.895	861222
4"	.210	NBR	4.895	861239
6"	.275	NBR	7.176	861277
8"	.375	IR	9.350	862717
10"	.407	IR	11.500	861697
12"	.407	IR	13.500	861703
14"	.407	IR	14.825	861765
16"	.407	IR	16.825	861772

NBR – Nitrile Butadiene Rubber

IR – Polyisoprene Rubber



### CERTA-LOK O-RING

PERMANENT USE

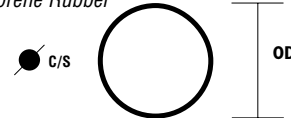
Teflon coated for ease of assembly

Maximum compression, high disassembly effort

Lubricant required to assemble all sizes.

SIZE (IN.)	C/S (IN.)	OD (IN.)	PART NO.
2"	.240	2.770	860607
3"	.240	3.900	860614
4"	.240	4.910	860621
6"	.313	7.176	860638
8"	.400	9.270	860645
10"	.438	11.500	860652
12"	.438	13.500	860669
14"	.438	14.825	860683
16"	.438	16.825	860690

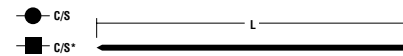
Material = Polyisoprene Rubber



### CERTA-LOK SPLINES

SIZE (IN.)	L (IN.)	C/S (IN.)	CONFIGURATION	PART NO.
2"	10.50	.188	ROUND	864605
3"	16.00	.250	ROUND	864612
4"	18.00	.250	ROUND	864629
4" HP	18.00	.250	SQUARE	864889
6"	24.00	.250	ROUND	864636
6" HP	24.00	.250	SQUARE	865060
8"	32.00	.313	SQUARE	864643
8" HP	32.00	.313	SQUARE	864643
10"	39.00	.375	SQUARE	864650
10" IRR	39.00	.313	SQUARE	864872
12"	46.00	.375 x .625	RECTANGLE	867309
12" IRR	46.00	.313	SQUARE	864896
14"	48.00	.375	SQUARE	864902
16"	56.00	.375 x .625	RECTANGLE	865336

IRR = Irrigation Splines required on Class 125 pipe.



### CERTA-LOK

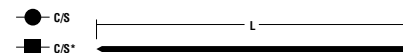
ACID RESISTANT SPLINES

SIZE (IN.)	L (IN.)	C/S (IN.)	CONFIG.	MATERIAL	PART NO.
3"	16	0.250	Round	PVDF	865718
4"	18	0.250	Round	PVDF	865725
6"	24	0.250	Round	PVDF	865749
8"	32	0.313	Square	PVDF	865756
10"	39	0.313	Round	PP	864735
12"	46	0.313	Round	PP	865299

\*2" is available on special-order basis only

PVDF-Polyvinylidene Fluoride

PP-Polypropylene



**CERTA-LOK  
SPLINE INSERTION TOOL**

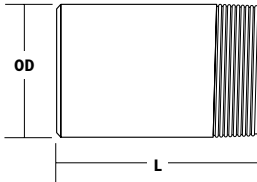
SPLINE SIZE	PART NO.
0.25" ROUND & 0.25" SQUARE	707964
0.313" SQUARE & 0.313" x 0.375" RECTANGLE	707971
0.375" SQUARE	707995
0.375" x 0.625" RECTANGLE	707940

CAUTION: Care must be taken not to overlap the spline when using insertion tool.

**CERTA-LOK NIPPLE**

PE x MIPT

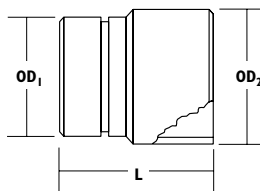
SIZE (IN.)	PSI	WT./PC. (LBS.)	OD (IN.)	L (IN.)	PART NO.
2"	200	0.60	2.375	5.25	705892
3"	190	1.25	3.500	6.50	705908
4"	160	2.50	4.500	7.00	705915
6"	140	5.70	6.625	9.00	705922
8"	120	10.25	8.625	10.40	705939



**CERTA-LOK BY CAST IRON  
ADAPTER NIPPLE**

C/L MALE x CAST IRON O.D. ADAPTER

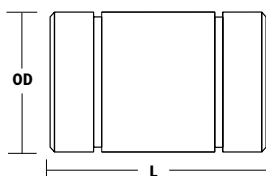
SIZE (IN.)	PSI	WT./PC. (LBS.)	OD <sub>1</sub> (IN.)	L (IN.)	OD <sub>2</sub> (IN.)	PART NO.
4"	250	2.62	4.500	10.0	4.80	708855
6"	250	6.25	6.625	12.0	6.90	708862
8"	250	12.52	8.625	13.0	9.05	708879
10"	200	21.50	10.750	16.0	11.10	707810
12"	200	23.00	12.750	16.0	13.20	707827



**CERTA-LOK NIPPLE**

C/L MALE x C/L MALE

SIZE (IN.)	PSI	WT./PC. (LBS.)	OD (IN.)	L (IN.)	PART NO.
4"	250	2.3	4.500	10.0	711008
6"	250	5.2	6.625	12.0	711015
8"	250	9.7	8.625	13.0	711022



DESCRIPTION	PART NO.
1 1/2 HP PORTABLE ROUTER (110 VOLT)	860072
4" JIG FIXTURE	860102
6" JIG FIXTURE	860119
8" JIG FIXTURE	860126
10" JIG FIXTURE	860133
12" JIG FIXTURE	860140
14" JIG FIXTURE	860416
16" JIG FIXTURE	860423
15 ° BEVELING BIT	860904
3/8" BIT ①	860171
1/2" BIT ②	860188
3/4" BIT ③	860362

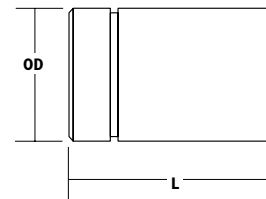
① for 4"-6" diameter ② for 8"-10" diameter ③ for 12"-16" diameter

**CERTA-LOK NIPPLE**

C/L MALE x PE

SIZE (IN.)	PSI	WT./PC. (LBS.)	OD (IN.)	L (IN.)	PART NO.
2"	250	0.60	2.375	7.0	705847
3"	250	1.40	3.500	9.0	705854
4"	250	2.30	4.500	10.0	705861
4" HP	315	3.10	4.500	10.0	706646
6"	250	5.20	6.625	12.0	705878
6" HP	315	7.20	6.625	12.0	706653
8"	250	9.70	8.625	13.0	705885
8" HP	315	13.80	8.625	13.0	706660
10"	200	11.07	10.750	16.0	706325
12"	200	15.50	12.750	16.0	706806 ①
14"	160	20.25	14.000	18.0	706349
16"	200	25.00	16.000	18.0	706356

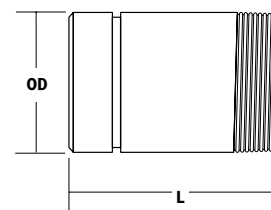
① for SDR26 and SDR21



**CERTA-LOK NIPPLE**

C/L MALE x MIPT

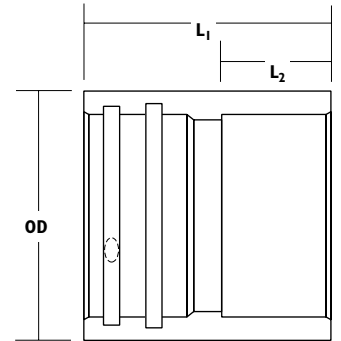
SIZE (IN.)	PSI	WT./PC. (LBS.)	OD (IN.)	L (IN.)	PART NO.
2"	200	0.60	2.375	7.00	705991
3"	190	1.30	3.500	9.00	706004
4"	160	2.40	4.500	10.00	706011
6"	140	5.20	6.625	12.00	706028
8"	120	9.00	8.625	13.00	706035



**CERTA-LOK X  
SOLVENT WELD COUPLING**

C/L FEMALE x SOLVENT WELD SOCKET END

SIZE (IN.)	PSI	WT./PC. (LBS.)	L <sub>1</sub>	L <sub>2</sub>	OD	NON PERM. USE	PART NO. PERM. USE
2"	250	1.00	5.50	2.375	3.20	705359	715358
3"	250	2.20	8.00	3.500	4.38	705366	715365
4"	250	3.50	9.00	4.000	5.47	705373	715372
6"	250	6.40	9.00	4.000	7.84	705380	715389
8"	250	11.30	10.13	4.500	10.19	705397	715396
10"	200	16.00	12.13	5.750	12.44	705083	715082
12"	200	17.80	12.13	5.750	14.65	705090	715099
14"	160	36.60	12.13	5.750	16.00	705205	715129
16"	90	22.00	12.13	5.750	17.40	705212	715136

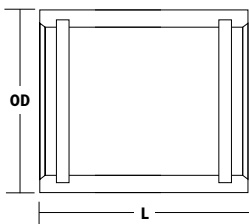


**IPS REPAIR COUPLING**

UNRESTRAINED

SIZE (IN.)	PSI	WT./PC. (LBS.)	OD (IN.)	L (IN.)	PART NO.
2"	250	1.52	3.20	9.0	742026
3"	250	2.32	4.38	9.0	742040
4"	250	3.38	5.47	9.0	742064
6"	250	6.12	7.84	9.0	742088
8"	250	10.17	10.19	10.13	742095
10"	200	14.25	12.44	12.13	742101
12"	200	21.50	14.65	12.13	742118

Note: When used with Certalok Yelomine system, which is a restrained system, repair couplings must be externally restrained. If a restrained joint is required, it must be applied externally.

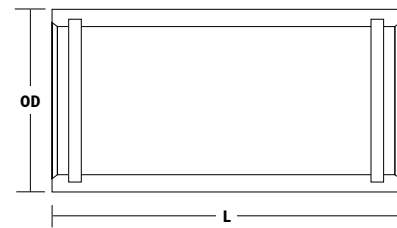


**IPS REPAIR COUPLING**

LONG LENGTHS 18" UNRESTRAINED

SIZE (IN.)	PSI	WT./PC. (LBS.)	OD (IN.)	L (IN.)	PART NO.
2"	250	3.81	3.20	18.0	741029
3"	250	5.76	4.38	18.0	741043
4"	250	7.91	5.47	18.0	741067
6"	250	14.13	7.84	18.0	741081
8"	250	24.38	10.19	18.0	741098
10"	200	34.46	12.44	18.0	741104
12"	200	45.78	14.65	18.0	741111

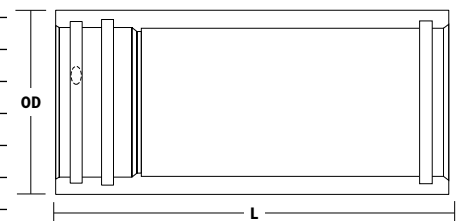
Note: When used with Certalok Yelomine system, which is a restrained system, repair couplings must be externally restrained. If a restrained joint is required, it must be applied externally.



**CERTA-LOK  
YELOMINE X IPS  
EXPANSION COUPLING**

SIZE (IN.)	PSI	WT./PC. (LBS.)	OD (IN.)	L (IN.)	PART NO.
2"	250	3.32	3.20	18.00	716423
3"	250	5.00	4.38	18.00	716430
4"	250	6.98	5.47	18.00	716447
6"	250	12.69	7.84	18.00	716454
8"	250	21.30	10.19	18.00	716461
10"	200	28.13	12.44	18.00	716478
12"	200	37.45	14.65	18.00	716485
14"	160	49.00	16.00	18.00	716522
16"	200	47.45	17.40	18.00	716539

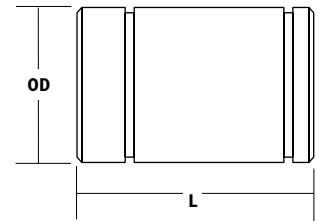
Note: Expansion couplings are not a restrained joint.



### CERTA-LOK TRANSITION FITTING

C/L MALE x STANDARD METAL GROOVE (SMG)

SIZE (IN.)	PSI	WT./PC. (LBS.)	OD (IN.)	L (IN.)	PART NO.
2"	**	0.60	2.375	7.0	710315
3"	**	1.60	3.500	9.0	710322
4"	**	2.50	4.500	10.0	710339
4" HP	**	3.10	4.500	10.0	706523
6"	**	5.20	6.625	12.0	710346
6" HP	**	7.20	6.625	12.0	706530
8"	**	9.00	8.625	13.5	710353
10"	**	11.07	10.750	16.0	707834
12"	**	19.20	12.750	16.0	707841
14"	**	20.25	14.000	18.0	710360
16"	**	25.00	16.000	18.0	710377



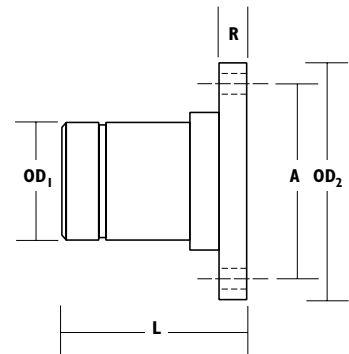
**\*Caution:** Certalok to "SMG" Adapters, when assembled with the proper Victaulic, Grinnell or similar coupling, have long-term hydrostatic strengths equal to all other Certalok fittings. However, the resistance of the grooved adapter and coupling assembly to thrust loads is significantly less than that of Certalok couplings. Therefore, these adapters should be supported against thrust loads.

\*\*Unrestrained pressure rating (PSI) to be determined by the Victaulic coupling or similar coupling manufacturer, as each manufacturer's rating may be different due to design.

### CERTA-LOK FLANGE ADAPTER

C/L MALE x FLANGE

SIZE (IN.)	PSI	WT./PC. (LBS.)	OD <sub>1</sub> (IN.)	OD <sub>2</sub> (IN.)	NOM. R. (IN.)	L (IN.)	BOLT CIRCLE DIA. A (IN.)	NO. HOLES	PART NO.
2"	150	1.60	2.375	6.00	0.813	7.19	4.75	4	705748
3"	150	3.20	3.500	7.50	1.063	9.25	6.00	4	705755
4"	150	5.00	4.500	9.00	1.125	10.25	7.50	8	705762
6"	150	9.00	6.625	11.00	1.281	12.44	9.50	8	705779
8"	150	16.00	8.625	13.50	1.375	13.38	11.75	8	705786
10"	150	25.40	10.750	16.00	1.625	16.69	14.25	12	707773
12"	150	36.70	12.750	19.00	1.500	16.63	17.00	12	707780
14"	150	75.00	14.000	21.00	2.000	18.50	12.00	00	706479
16"	150	105.00	16.000	23.50	2.375	18.75	21.25	16	706486

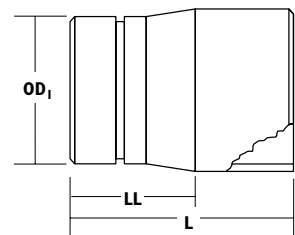


① All flanges Van Stone style with glass-filled PVC ring.

### CERTA-LOK ADAPTER

C/L MALE x SOLVENT WELD BELL

SIZE (IN.)	PSI	WT./PC. (LBS.)	OD <sub>1</sub> (IN.)	L (IN.)	LL (IN.)	PART NO.
2"	250	0.50	2.375	6.625	4.125	705304
3"	250	1.40	3.500	8.625	5.125	705311
4"	250	2.30	4.500	9.250	4.875	705328
4" HP	315	6.10	4.500	9.250	4.875	706493
6"	250	5.30	6.625	11.375	5.375	705335
6" HP	315	10.70	6.625	11.375	5.375	706509
8"	250	9.00	8.625	12.875	6.875	705342
8" HP	315	18.60	8.625	12.875	6.875	706516
10"	200	11.00	10.750	15.250	9.250	705168
12"	200	15.00	12.750	15.250	9.250	705175

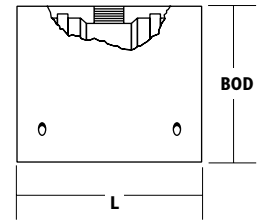




### CERTA-LOK TAPPED COUPLING

C/L FEMALE x C/L FEMALE • FIPT OUTLET

SIZE (IN.)	PSI	WT./PC. (LBS.)	OUTLET SIZE (IN.)	BOD (IN.)	L (IN.)	NON PERM. USE	PART NO. PERM. USE
2" x 2"	200	1.50	0.75	3.20	7.00	705403	715402
2" x 2"	200	1.40	1.00	3.20	7.00	705441	715440
3" x 3"	200	2.60	0.75	4.38	9.50	705410	715419
3" x 3"	200	2.90	1.00	4.38	9.50	705458	715457
3" x 3"	160	2.70	1.50	4.38	9.50	705465	715464
4" x 4"	200	4.10	0.75	5.47	10.50	705427	715426
4" x 4"	200	4.10	1.00	5.47	10.50	705472	715471
4" x 4"	160	4.00	1.50	5.47	10.50	705489	715488
4" x 4" HP	300	8.50	1.50	5.96	10.50	706585	716584
6" x 6"	200	7.90	0.75	7.84	11.25	705434	715433
6" x 6"	200	7.90	1.00	7.84	11.25	705496	715495
6" x 6"	200	7.90	1.50	7.84	11.25	705502	715501
6" x 6" HP	300	14.00	1.50	8.37	11.25	706592	716591
6" x 6"	160	7.90	2.00	7.84	11.25	705540	715549
6" x 6"	160	9.83	2.00 DT	7.84	11.25	705557	715556
8" x 8"	200	15.00	1.00	10.19	12.50	705519	715518
8" x 8"	200	15.00	1.50	10.19	12.50	705526	715525
8" x 8"	160	15.00	2.00	10.19	12.50	705533	715532
8" x 8"	160	17.30	2.00 DT	10.19	12.50	705564	715563
8" x 8"	130	19.50	3.00	10.19	13.50	705588	715587
8" x 8"	130	19.50	3.00 DT	10.19	13.50	705571	715570
10" x 10"	160	18.90	1.50	12.44	15.00	707858	717857
10" x 10"	160	19.00	2.00	12.44	15.00	707797	717796
10" x 10"	130	27.30	3.00 DT	12.44	16.00	705595	

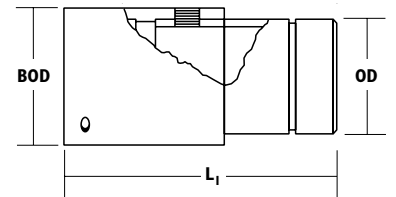


### CERTA-LOK TAPPED COUPLING

C/L FEMALE x C/L MALE • FIPT OUTLET

SIZE (IN.)	PSI	WT./PC. (LBS.)	OUTLET SIZE (IN.)	OD (IN.)	BOD (IN.)	L (IN.)	NON PERM. USE	PART NO. PERM. USE
2" x 2"	250	1.60	0.75	2.375	3.20	10.13	700651	710650
2" x 2"	250	1.50	1.00	2.375	3.20	10.13	700668	710667
3" x 3"	250	3.60	1.50	3.500	4.38	13.50	705687	715686
4" x 4"	250	5.80	1.50	4.500	5.47	15.00	705694	715693
6" x 6"	250	11.50	1.50	6.625	7.84	17.00	700569	710568
6" x 6"	250	11.40	2.00	6.625	7.84	17.00	700576	710575
8" x 8"	250	20.60	1.50	8.625	10.19	19.00	705724	715723
8" x 8"	250	21.40	2.00	8.625	10.19	19.00	705731	715730
10" x 10"	200	27.00	2.00	10.750	12.44	22.25	705663	715662
12" x 12"	200	33.00	2.00	12.750	14.65	22.25	705670	715679

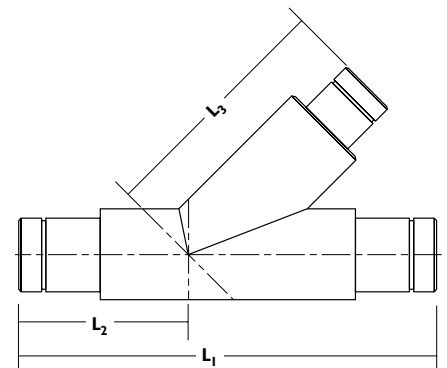
\*FIPT Threads



### CERTA-LOK WYES

C/L MALE X C/L MALE X C/L MALE

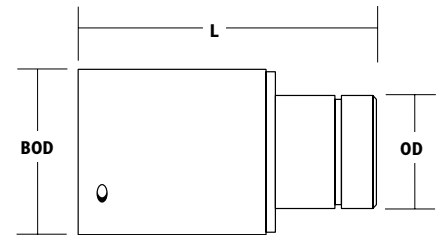
SIZE (IN.)	PSI	WT/PC (LBS.)	DIMENSIONS (IN.)			PART NO.
			L1	L2	L3	
4"	150	11.00	26.25	10.78	16.03	707018
6"	150	27.70	33.88	13.41	20.63	706677
8"	100	69.00	44.75	18.06	26.69	706721



### CERTA-LOK REDUCER

C/L FEMALE x C/L MALE

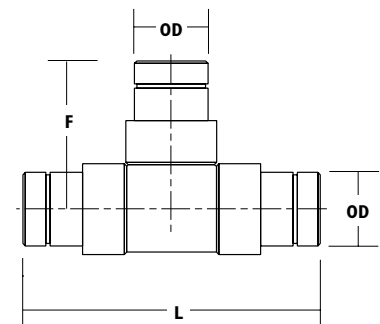
SIZE (IN.)	PSI	WT/PC. (LBS.)	OD (IN.)	BOD (IN.)	L (IN.)	PART NO. NON PERM. USE	PERM. USE
3" x 2"	250	4.30	2.375	4.380	13.88	706134	—
4" x 2"	250	5.00	2.375	5.470	15.25	706141	716140
4" x 3"	250	5.70	3.500	5.470	16.56	706158	716157
6" x 2"	250	10.40	2.375	7.840	15.75	706165	716164
6" x 3"	250	11.00	3.500	7.840	16.50	706318	716317
6" x 4"	250	11.10	4.500	7.840	17.38	706172	716171
8" x 2"	250	11.10	2.375	10.190	17.00	706189	716188
8" x 4"	250	24.10	4.500	10.190	15.63	706196	716195
8" x 6"	250	24.60	6.625	10.190	18.50	706202	716201
10" x 8"	200	42.00	8.625	12.440	19.75	706219	716218
12" x 8"	200	54.00	8.625	14.650	19.25	706226	716225
12" x 10"	200	44.10	14.650	12.440	22.25	706257	—
14" x 6"	160	69.00	6.625	16.000	22.25	706370	716379
14" x 8"	160	85.15	8.625	16.000	22.25	706387	716386
14" x 10"	160	72.99	12.440	16.000	22.25	706394	716393
14" x 12"	160	52.20	14.650	16.000	22.25	706233	716232
16" x 10"	90	27.00	17.400	12.440	24.25	707025	—
16" x 12"	90	70.35	17.400	14.650	24.25	706400	—



### CERTA-LOK TEE

C/L MALE x C/L MALE x C/L MALE

SIZE (IN.)	PSI	WT/PC. (LBS.)	OD (IN.)	L (IN.)	F (IN.)	PART NO.
2" x 2" x 2"	250	2.30	2.375	16.50	10.88	704918
3" x 3" x 3"	250	5.80	3.500	21.50	11.25	704925
4" x 4" x 4"	250	10.70	4.500	24.75	12.38	704628
4" x 4" x 4" (HP)	315	12.90	4.500	24.75	12.38	706608
6" x 6" x 6"	250	25.00	6.625	31.00	15.50	704635
8" x 8" x 8"	250	48.00	8.625	36.25	17.75	704642
10" x 10" x 10"	200	63.00	10.750	45.38	22.70	704581
12" x 12" x 12"	200	86.00	12.750	45.00	22.50	704598
14" x 14" x 14"	160	164.30	14.000	52.00	26.00	704529
16" x 16" x 16"	160	216.00	16.000	54.00	27.00	704536

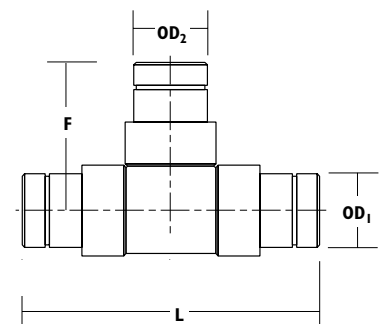


Note: Also available on special order with pipe threaded branch in size 2" through 8"

### CERTA-LOK REDUCING TEE

C/L MALE x C/L MALE x C/L MALE

SIZE (IN.)	PSI	WT/PC. (LBS.)	OD <sub>1</sub> (IN.)	OD <sub>2</sub> (IN.)	L (IN.)	F (IN.)	PART NO.
3" x 3" x 2"	250	5.00	3.500	2.375	21.00	8.84	704932
4" x 4" x 2"	250	10.10	4.500	2.375	22.88	9.47	704673
4" x 4" x 3"	250	10.80	4.500	3.500	24.19	11.66	704680
6" x 6" x 2"	250	23.83	6.625	2.375	28.13	11.75	704697
6" x 6" x 3"	250	24.20	6.625	3.500	28.13	12.75	704703
6" x 6" x 4"	250	24.40	6.625	4.500	29.19	13.75	704710
8" x 8" x 6"	250	50.90	8.625	6.625	33.50	16.81	704727
10" x 10" x 6"	200	62.10	10.750	6.625	39.75	17.84	704543
12" x 12" x 4"	200	87.00	12.750	4.500	42.75	16.75	704505
12" x 12" x 6"	200	89.40	12.750	6.625	47.00	21.75	704567
12" x 12" x 8"	200	98.60	12.750	8.625	41.50	24.63	704574

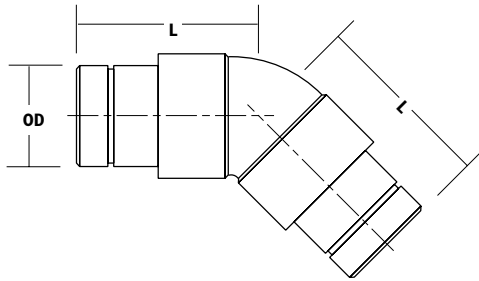


Note: Also available on special order with pipe threaded branch in size 2" through 8"

**CERTA-LOK 45° ELLS**

C/L MALE x C/L MALE

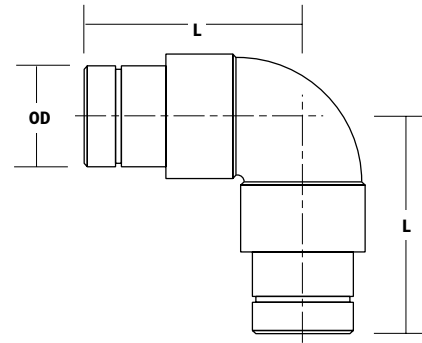
SIZE (IN.)	PSI	WT./PC. (LBS.)	OD (IN.)	L (IN.)	PART NO.
2"	250	1.60	2.375	7.75	704949
3"	250	3.90	3.500	9.75	704956
4"	250	7.10	4.500	11.25	704826
4"/HP	315	8.60	4.500	11.25	706615
6"	250	16.10	6.625	13.00	704833
8"	250	30.90	8.625	15.00	704840
10"	200	37.00	10.750	18.50	704789
12"	200	65.00	12.750	19.50	704796
14"	160	82.00	14.000	22.00	705007
16"	200	144.00	16.000	22.50	705014



**CERTA-LOK 90° ELLS**

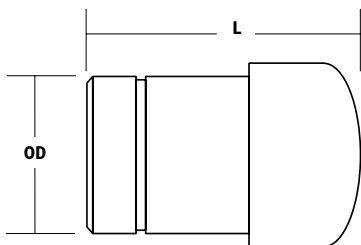
C/L MALE x C/L MALE

SIZE (IN.)	PSI	WT./PC. (LBS.)	OD (IN.)	L (IN.)	PART NO.
2"	250	1.70	2.375	8.00	704963
3"	250	4.10	3.500	10.18	704970
4"	250	7.50	4.500	12.38	704888
4"/HP	315	10.00	4.500	12.38	706622
6"	250	17.40	6.625	15.63	704895
8"	250	33.70	8.625	18.00	704901
10"	200	65.00	10.750	26.75	704765
12"	200	83.00	12.750	28.75	704772
14"	160	141.50	14.000	33.00	704741
16"	200	172.40	16.000	35.00	704758



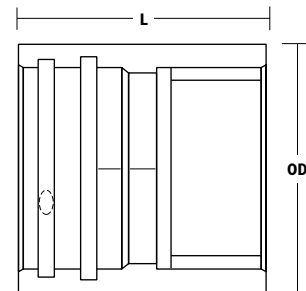
**CERTA-LOK END PLUG**

SIZE (IN.)	PSI	WT./PC. (LBS.)	OD (IN.)	L (IN.)	PART NO.
2"	250	0.90	2.375	7.50	704987
3"	250	2.00	3.500	10.00	704994
4"	250	3.70	4.500	11.00	706288
4"/HP	315	4.40	4.500	11.00	706639
6"	250	8.50	6.625	14.00	706295
8"	250	16.20	8.625	17.50	706301



**CERTA-LOK END CAP**

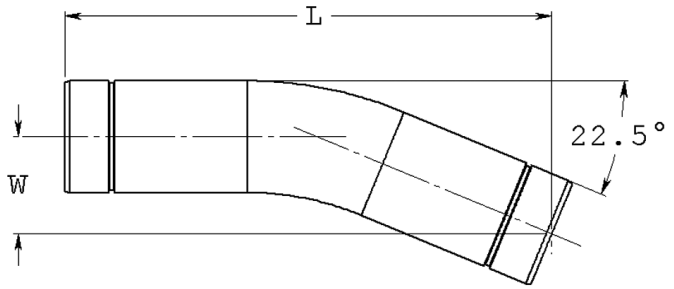
SIZE (IN.)	PSI	WT./PC. (LBS.)	OD (IN.)	L (IN.)	PART NO. (NON-PERM)
4"	250	4.20	5.47	9.00	700002
6"	250	9.00	7.84	9.00	700019
8"	250	17.00	10.19	10.13	700026
10"	200	22.00	12.44	12.13	700033
12"	200	28.00	14.65	12.13	700040



**CERTA-LOK 22.5° SWEEP BENDS**

C/L MALE x C/L MALE

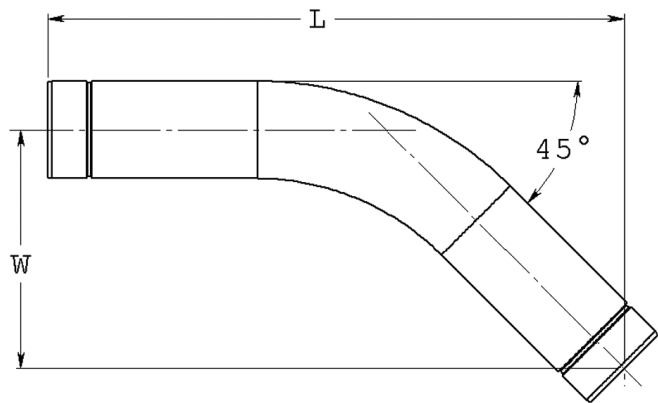
SIZE (IN.)	PSI	WT./PC. (LBS.)	OD (IN.)	L (IN.)	W (IN.)	PART NO.
2"	250	2.00	2.375	17-5/16	3-7/16	710780
3"	250	4.90	3.500	26	5-3/16	710797
4"	250	7.50	4.500	26-1/16	5-3/16	710803
6"	250	18.30	6.625	28-15/16	5-3/4	710810
8"	250	35.00	8.625	43-3/8	8-5/8	710827
10"	200	87.00	10.750	69-7/16	13-13/16	705236
12"	200	105.00	12.750	69-7/16	13-13/16	705243
14"	160	105.40	14.000	83-7/8	16-11/16	706417
16"	200	119.00	16.000	83-7/8	16-11/16	706424



**CERTA-LOK 45° SWEEP BENDS**

C/L MALE x C/L MALE

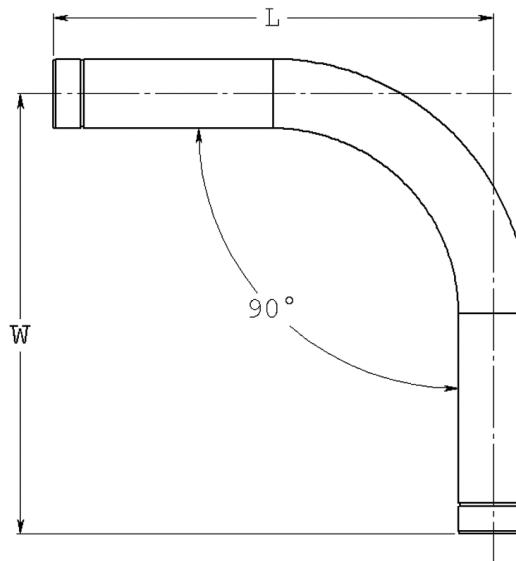
SIZE (IN.)	PSI	WT./PC. (LBS.)	OD (IN.)	L (IN.)	W (IN.)	PART NO.
2"	250	2.00	2.375	18-1/8	7-1/2	710834
3"	250	4.90	3.500	25-11/16	10-3/4	710841
4"	250	7.50	4.500	28-3/4	11-7/8	710858
4" HP	315	11.60	4.500	28-3/4	11-7/8	706561
6"	250	18.30	6.625	39-3/16	16-1/4	710865
6" HP	315	26.20	6.625	39-3/16	16-1/4	706578
8"	250	35.00	8.625	52	21-9/16	710872
10"	200	87.00	10.750	72-7/8	30-3/16	705250
12"	200	105.00	12.750	72-15/16	30-3/16	705274
14"	160	151.00	14.000	85-7/8	35-9/16	706431
16"	200	162.00	16.000	85-7/8	35-9/16	706448



**CERTA-LOK 90° SWEEP BENDS**

C/L MALE x C/L MALE

SIZE (IN.)	PSI	WT./PC. (LBS.)	OD (IN.)	L (IN.)	W (IN.)	PART NO.
2"	250	2.40	2.375	16-1/16	16-1/16	710889
3"	250	6.40	3.500	23-1/8	23-1/8	710896
4"	250	12.70	4.500	30-1/4	30-1/4	710902
4" HP	315	14.90	4.500	30-1/4	30-1/4	706547
6"	250	31.00	6.625	42	42	710919
6" HP	315	45.30	6.625	42	42	706554
8"	250	59.00	8.625	46-5/8	46-5/8	710926
10"	200	120.00	10.750	71-3/8	71-3/8	705267
12"	200	165.00	12.750	71-13/16	71-13/16	705281
14"	160	217.00	14.000	78-5/8	78-5/8	706455
16"	200	234.00	16.000	78-5/8	78-5/8	706462



**ASK ABOUT ALL OF OUR OTHER CERTAINTEED® PRODUCTS AND SYSTEMS:**

ROOFING • SIDING • TRIM • WINDOWS • DECKING • RAILING • FENCE  
INSULATION • GYPSUM • CEILINGS • FOUNDATIONS • PIPE

CertainTeed Corporation  
P.O. Box 860  
Valley Forge, PA 19482

Phone: 866-CT4-PIPE (866-284-7473)  
Fax: 610-254-5428

[www.certainteed.com](http://www.certainteed.com) <http://blog.certainteed.com>

© 3/11 CertainTeed Corporation, Printed in the U.S.A.  
Code No. 40-90-43L