

BATHTUB UNIT STRAINERS

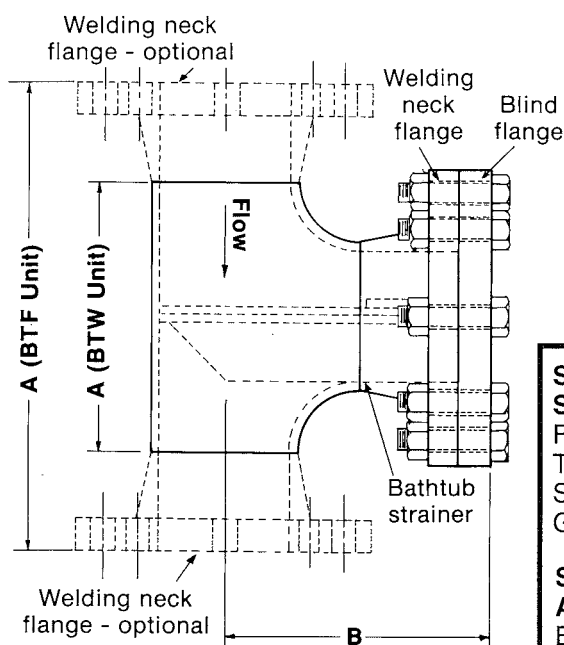
Specification Information Required For Standard Catalog Products

1. Strainer Style, Size, Flange Type (e.g. BTF - 6" 150# RF)
2. Pipe Schedule
3. Strainer Basket Material Type (e.g. Carbon Steel)

Additional Specification Options

4. Design Pressure and Temperature

5. Alternate Design Code (ASME Section VIII, Div. 1, unless otherwise noted)
6. Materials of Construction (Housing and Strainer Basket)
7. Drain and Vent Size, Orientation and Type
8. Access Closure Choices (e.g. Quick Opening, Blind Flange, etc.)
9. Special Dimensions
10. Special QC Requirements (Testing, Marking/Tagging, Traceability, Paperwork, etc.)



Note: Mack Iron BT housings have a complete "U" shaped basket support track.

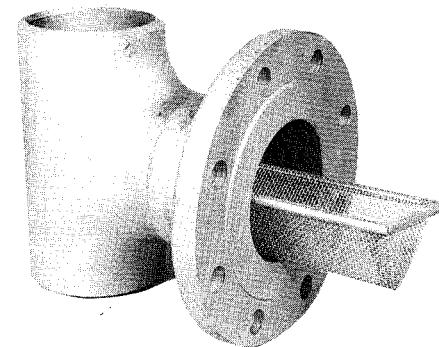
The BT strainer, like the PL strainer, is a housing and strainer combination which permits strainer removal and/or cleaning without disturbing adjacent piping. BT strainers are fabricated using buttweld tees and are the most economical strainer/housing combination. The fabricated nature of the BT allows flexibility in design; they can be supplied with butt weld ends or flanged ends, for straight flow or right angle flow. To further facilitate easy cleanout procedures, various styles of closures (see p. 21) are available.

STANDARD MATERIAL SPECIFICATIONS

Flanges: A105
 Tee: A234 WPB, Standard Weight
 Studs/Nuts: A193 Gr. B7 / A194 Gr. 2H
 Gasket: 1/16" thk. Non-Asbestos Gasket

STANDARD DESIGN PRESSURE AND TEMPERATURE

BT 150: 150 PSIG @ 500° F
 BT 300: 300 PSIG @ 650° F



BTW - 4" 150#, Carbon Steel Standard Mesh Material Buttweld Ends

BTF & BTW UNIT

Pipe Size	BTF UNIT For Flange Connection				BTW UNIT For Welded Connection			
	150 lb.		300 lb.		150 lb.		300 lb.	
	A	B	A	B	A	B	A	B
2	10	5 ³ / ₄	10 ¹ / ₂	6 ¹ / ₈	5	5 ³ / ₄	5	6 ¹ / ₈
2 ¹ / ₂	11 ¹ / ₂	6 ⁵ / ₈	12	7	6	6 ⁵ / ₈	6	7
3	12 ¹ / ₄	7 ¹ / ₁₆	13	7 ⁵ / ₈	6 ³ / ₄	7 ¹ / ₁₆	6 ³ / ₄	7 ⁵ / ₈
4	14 ¹ / ₄	8 ¹ / ₁₆	15	8 ³ / ₄	8 ¹ / ₄	8 ¹ / ₁₆	8 ¹ / ₄	8 ³ / ₄
5	16 ³ / ₄	9 ⁵ / ₁₆	17 ¹ / ₂	10 ¹ / ₈	9 ³ / ₄	9 ⁵ / ₁₆	9 ³ / ₄	10 ¹ / ₈
6	18 ¹ / ₄	10 ¹ / ₈	19	10 ¹³ / ₁₆	11 ¹ / ₄	10 ¹ / ₈	11 ¹ / ₄	10 ¹⁵ / ₁₆
8	22	12 ¹ / ₈	22 ³ / ₄	13	14	12 ¹ / ₈	14	13
10	25	13 ¹¹ / ₁₆	26 ¹ / ₄	15	17	13 ¹¹ / ₁₆	17	15
12	29	15 ³ / ₄	30 ¹ / ₄	17 ¹ / ₈	20	15 ³ / ₄	20	17 ¹ / ₈
14	32	17 ³ / ₈	33 ¹ / ₄	18 ³ / ₄	22	17 ³ / ₈	22	18 ³ / ₄
16	34	18 ¹ / ₁₆	35 ¹ / ₂	20	24	18 ¹ / ₁₆	24	20
18	38	20 ⁹ / ₁₆	39 ¹ / ₂	22 ¹ / ₈	27	20 ⁹ / ₁₆	27	22 ¹ / ₈
20	41 ³ / ₈	22 ³ / ₈	42 ³ / ₄	23 ⁷ / ₈	30	22 ³ / ₈	30	23 ⁷ / ₈
24	46	24 ⁷ / ₈	47 ¹ / ₄	26 ³ / ₈	34	24 ⁷ / ₈	34	26 ³ / ₈

In-House, SNT-TC-1A qualified magnetic particle and liquid penetrant non-destructive testing, performed in accordance with ASME Section VIII, is available upon request.

STRAINER BASKET AVAILABLE SEPARATELY

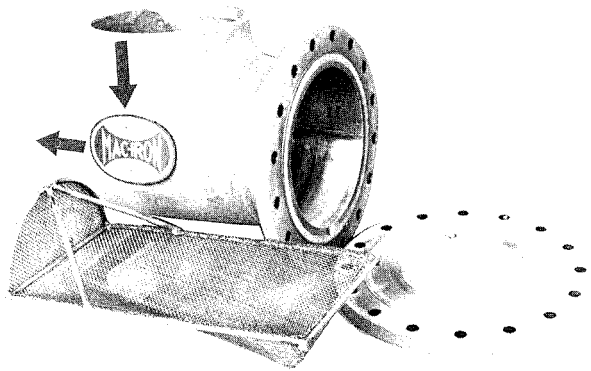


THE MACK IRON WORKS COMPANY

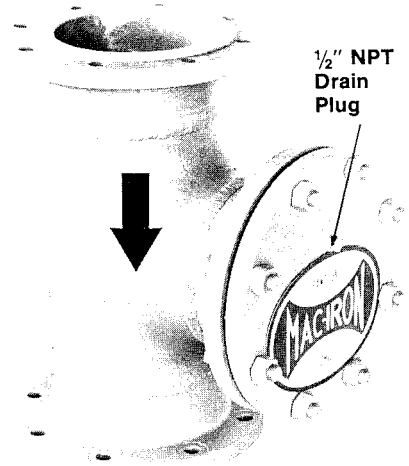
124 WARREN ST. P.O. BOX 5931 SANDUSKY, OHIO 44871-5931
 PHONE 419 626-6225 FAX 419 626-3362



All BT strainer housings are designed to ASME Section VIII, Div. 1 requirements and fabricated using Code quality material by Code qualified welders and procedures, unless otherwise specified. Units are not "U" stamped unless specified.



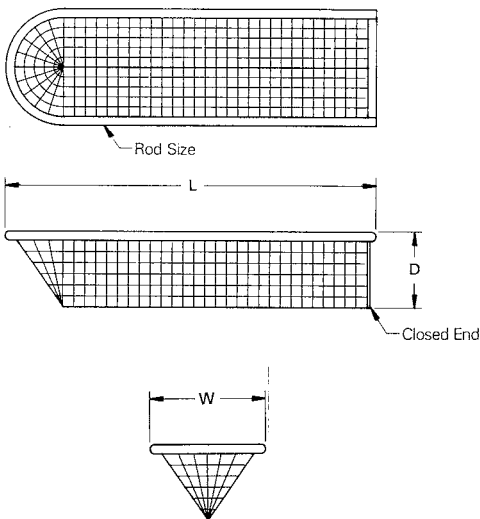
U
 MAY BE STAMPED IN ACCORDANCE WITH THE ASME CODE



BTW - 18" 150#, Carbon Steel
 Right Angle Flow Style
 Buttweld Ends
 Standard Mesh Material

BTF - 8" 150# RF, Carbon Steel
 Flange Ends

SERIES BT BASKET DIMENSIONS



Pipe Size	Schedule of Pipe	150 lb.			300 lb.			Rod Size	Approx. Net Wt. Each lb.
		L	W	D	L	W	D		
2	Std	6	1 ⁵ / ₁₆	1 ¹ / ₄	6 ¹ / ₄	1 ¹⁵ / ₁₆	1 ¹ / ₄	1/4	.5
	80	5 ¹⁵ / ₁₆	1 ¹ / ₁₆	1 ¹ / ₁₆	6 ³ / ₁₆	1 ³ / ₁₆	1 ¹ / ₁₆	1/4	
2 1/2	Std	6 ¹ / ₁₆	2 ⁵ / ₁₆	1 ¹ / ₁₆	7 ³ / ₁₆	2 ⁵ / ₁₆	1 ¹ / ₁₆	1/4	.5
	80	6 ³ / ₁₆	2 ³ / ₁₆	1 ³ / ₁₆	7 ¹ / ₁₆	2 ³ / ₁₆	1 ³ / ₁₆	1/4	
3	Std	7 ³ / ₁₆	2 ¹ / ₁₆	1 ³ / ₁₆	8	2 ¹⁵ / ₁₆	1 ³ / ₁₆	1/4	.5
	80	7 ¹ / ₁₆	2 ¹ / ₁₆	1 ¹ / ₁₆	7 ¹⁵ / ₁₆	2 ³ / ₁₆	1 ¹ / ₁₆	1/4	
3 1/2	Std	8 ³ / ₁₆	3 ¹ / ₁₆	2	8 ⁹ / ₁₆	3 ³ / ₁₆	2	1/4	.6
	80	8 ¹ / ₁₆	3 ¹ / ₁₆	1 ⁷ / ₁₆	8 ¹ / ₂	3 ¹ / ₁₆	1 ⁷ / ₁₆	1/4	
4	Std	9 ¹ / ₁₆	3 ³ / ₁₆	2 ¹ / ₁₆	9 ¹ / ₁₆	3 ¹ / ₁₆	2 ¹ / ₁₆	1/4	.7
	80	9	3 ¹ / ₁₆	2 ¹ / ₁₆	9 ³ / ₁₆	3 ¹¹ / ₁₆	2 ¹ / ₁₆	1/4	
5	Std	10 ³ / ₁₆	4 ¹⁵ / ₁₆	2 ⁷ / ₁₆	11 ¹ / ₁₆	4 ¹⁵ / ₁₆	2 ⁷ / ₁₆	3/8	.8
	80	10 ⁵ / ₁₆	4 ¹ / ₁₆	2 ⁵ / ₁₆	11	4 ¹¹ / ₁₆	2 ⁵ / ₁₆	3/8	
6	Std	12 ¹ / ₁₆	5 ¹⁵ / ₁₆	3 ³ / ₁₆	12 ¹ / ₁₆	5 ¹⁵ / ₁₆	3 ³ / ₁₆	3/8	1.75
	80	12	5 ⁵ / ₁₆	3 ¹ / ₁₆	12 ³ / ₁₆	5 ⁵ / ₁₆	3 ¹ / ₁₆	3/8	
8	Std	14 ¹⁵ / ₁₆	7 ¹ / ₁₆	4 ⁵ / ₁₆	15 ¹ / ₁₆	7 ¹³ / ₁₆	4 ⁵ / ₁₆	3/8	3
	80	14 ¹ / ₁₆	7 ¹ / ₂	4 ³ / ₁₆	15 ¹ / ₁₆	7 ¹ / ₂	4 ³ / ₁₆	3/8	
10	Std	17 ¹ / ₁₆	9 ⁵ / ₁₆	5 ⁵ / ₁₆	18 ¹ / ₁₆	9 ⁵ / ₁₆	5 ⁵ / ₁₆	3/8	4
	80	17 ¹ / ₁₆	9 ⁷ / ₁₆	5 ⁵ / ₁₆	17 ¹ / ₁₆	9 ⁹ / ₁₆	5 ⁵ / ₁₆	3/8	
12	Std	20 ¹ / ₁₆	11 ¹ / ₁₆	6 ⁵ / ₁₆	21 ¹ / ₁₆	11 ¹ / ₁₆	6 ⁵ / ₁₆	3/8	6
	80	20 ³ / ₁₆	11 ¹ / ₄	6 ¹ / ₁₆	20 ¹³ / ₁₆	11 ¹ / ₄	6 ¹ / ₁₆	3/8	
14	Std	22 ⁵ / ₁₆	13 ¹ / ₁₆	7 ¹ / ₁₆	23 ¹ / ₁₆	13 ¹ / ₁₆	7 ¹ / ₁₆	1/2	10
16	Std	24 ⁵ / ₁₆	15 ¹ / ₁₆	8 ¹ / ₁₆	25 ⁵ / ₁₆	15 ¹ / ₁₆	8 ¹ / ₁₆	1/2	12
18	Std	27 ¹ / ₁₆	17 ¹ / ₁₆	9 ¹ / ₁₆	28 ¹ / ₁₆	17 ¹ / ₁₆	9 ¹ / ₁₆	1/2	15
20	Std	30 ⁵ / ₁₆	19 ¹ / ₁₆	10 ¹ / ₁₆	31	19 ¹ / ₁₆	10 ¹ / ₁₆	1/2	17
24	Std	34 ⁵ / ₁₆	23 ¹ / ₁₆	12 ¹ / ₁₆	35 ¹ / ₁₆	23 ¹ / ₁₆	12 ¹ / ₁₆	1/2	20

Larger sizes and higher ratings available upon request.

Dimensions - inches

JUST IN TIME DELIVERY

Mack Iron is prepared to respond quickly to your emergency strainer needs; **we can have the following sizes of standard Mack Iron BT strainers ready to ship within 24 hours of your order:**

Carbon Steel BTW - 150# - Sizes 2", 3", 4", 6", 8", 10" (all std. wt. Tees)

Carbon Steel BTW - 300# - Sizes 2", 3", 4", 6", 8" (all std. wt. Tees)

(Strainer baskets available with standard mesh or perforated plate)

