

### **FREEZ-FITER PILOT-REGULATOR HEATER PREVENTS FREEZE-UPS**

- Heats gas supply to controllers, pilots and instrument regulators
- Heat source - Bruest flameless catalytic heater
- Fuel: natural gas, L.P. (propane) or butane gas
- Low fuel consumption
- FM models suitable for use in Class 1, Division 2, Group D locations
- CSA models suitable for use in Class 1, Division 1 and 2, Group D locations
- Single coil standard - dual coil model available (use with 2 regulators)
- Low pressure fuel gas regulator comes with unit (maximum 50 PSI inlet pressure)
- Preheat fuel gas tube

### **FREEZ-FILTER SPECIFICATIONS**

<b>MODEL NO.</b>	<b>EXCHANGER COIL</b>	<b>HEATER</b>	<b>CASE DIMENSION</b>
1800	3/8" OD - Type 304 Stainless Steel • Operating Pressure • 2500 PSI-Max. Test Pressure - 5000 PSI • Exchanger Coil Pipe Fittings - 1/4" NPT	Bruest-SR-8 Catalytic Heater • Start-up Voltage - 12 Volt or 120 Volt • Stainless Steel Case • 2500 BTU Input • Fuel - Natural Gas at 3 1/2" W.C. • LP Gas at 11" W.C.	Size 12" x 12" x 4" with 1" Fiberglass Insulation • Stainless Steel Case
4000	Same as Above	Bruest-SR-12 Catalytic Heater • Start-up Voltage 12 Volt or 120 Volt • Stainless Steel Case • 5000 BTU Input • Fuel-Natural Gas at 3 1/2" W.C. • LP Gas at 11" W.C.	Size 16" x 16" x 4" with 1" Fiberglass insulation • Stainless Steel Case

### **ACCESSORY OPTIONS**

- High pressure fuel gas regulator; 6000 PSI max; 10-75 PSI outlet; Fisher 1301F
- Thermostat: 100° - 200°F range (Invensys)
- Explosion-proof junction box is standard on CSA models and optional on FM models
- 16 ft. - 12V electrical pigtail with battery clips for a standard or explosion-proof junction box
- 25 ft. - 12V electrical pigtail with battery clips for a standard or explosion-proof junction box
- Nupro relief valve (set @ 45 PSI) 1/4" npt

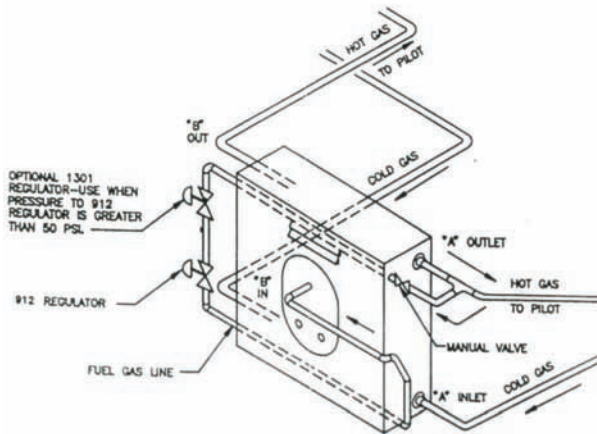


# Pilot Regulator Heater FIGHTS FREEZE-UPS

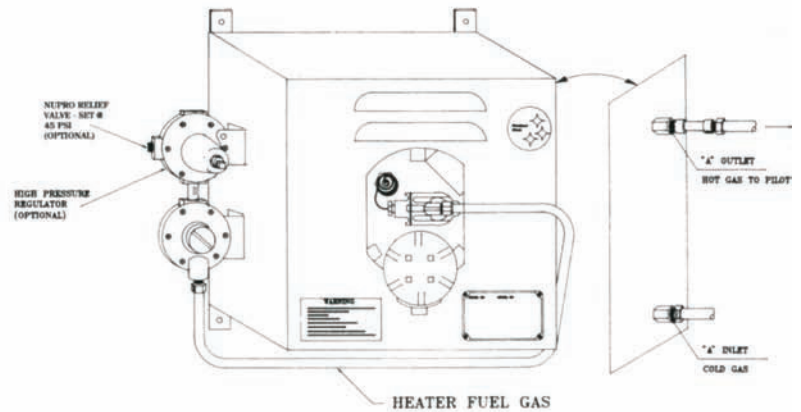
## Freez-Fiter Pilot Regulator Heater

### APPLICATIONS MODEL 1800 AND 4000

- Pilot Operated Regulators  
Grove Flexflow  
American Axial Flow  
Fisher 399 and 310  
Mooney  
Sprague
- Instrument Regulators
- Chromatographs
- Options: preheat fuel tube



**SAMPLE DUAL COIL INSTALLATION**



**SAMPLE INSTALLATION**

**FREEZ-FITER PLUS+**

**“AMERICA’S FAVORITE PILOT HEATER” NOW PROVIDES HIGHER ACCURACY, UPDATED FEATURES, AND CUSTOMIZATION TO YOUR NEEDS!**

Transmission and distribution companies, and public utilities have trusted Freez-Fiter from Bruest for more than 30 years.

Now, there are even more reasons to specify the field-proven performance of genuine Freez-Fiter heaters.

## Advantages of Freez-Fiter Plus:

- Freez-Fiter Plus has been re-engineered for greater airflow efficiency, and more uniform temperature control.
- New 6" enclosure has the same convenient O.D. (12" X 12") and uses the same R8 2500 BTU heater, but the case is now 6" deep for significantly greater airflow performance.
- Single or double coil serpentines are 3/8" stainless steel, and have 2500 lbs. of maximum working pressure. They are tested to 5000 lbs.
- Bulk heads have been re-engineered, and all high pressure connections are external: there are no high-pressure connections inside the enclosure.
- The low pressure regulator is a standard 912, (BelGas or Fisher). These direct-operated, spring-loaded regulators have limited-capacity external relief across the diaphragm to minimize over-pressure. Using natural gas, they have a 50 psi maximum inlet. The outlet is 3.5" w.c. to operate the Freez-Fiter.
- The Mertek thermostatic gas valve replaces the older thermostat and Baso valve. Both the gas valve and safety valve are CSA and FM approved.
- For greatest safety and convenience, a shutoff valve turns the gas off on the fuel inlet entering the heater.
- All units have a preheat fuel tube, which prevents high pressure regulator freeze-up.
- A filter on the low side of the fuel inlet slows the moisture and debris and prevents it from entering the heater. This filter also extends the service life of the pad.
- Freez-Fiter Plus units have a 0-15" w.c. gauge, easily visible from the front.
- Freez-Fiter units have a new rain-bill feature that protects the unit from rainwater.
- Every unit is leak-tested and pressure-checked in the Bruest lab.
- Heater is Class 1, Division 1 and 2, Group D approved. (CSA and FM)

**Options for the Freez-Fiter Plus** include a 12 volt or 120 volt design and several types of high pressure regulators. A larger unit, 16"X16", with an R12 5000 BTU heater is also available.

**Freez-Fiter Plus is a field-proven pilot heater** backed by Bruest, the nation's most respected provider of heating systems for gas transmission and distribution lines, and utilities.



*Freez-Fiter Plus is a versatile system engineered for pilots, and for inline heating, too. It is ideal for the heating of gas lines that run to actuators, regulators or other equipment.*



## **SUPER FREEZ-FITER IS THE PIPELINE HEATER FOR HIGH PRESSURE CUT, LOW FLOW HEATING APPLICATIONS**

The Super Freez-Fiter pipeline heater has all the power, performance and pedigree of the industry-leading Bruest HotCat pipeline heater. Yet it's specifically engineered for high-pressure, low-flow applications.

### **Super Freez-Fiter:**

- Sources and conditions its own fuel
- Provides direct heating and maximum heat transfer efficiency. Only heat to duty required
- Can have 2, 4 or 6 flameless catalytic heaters, and one to three 21' coils exposed to the heat, providing **optimum dwell time for low-flow applications**
- Monitors the heated gas outlet temperature
- Modulates the fuel flow to minimize fuel consumption
- Pipeline heater is stand-alone, and self-contained
- 28,000 BTU, 56,000 BTU and 86,000 BTU units are available, standard



**This unique pipeline heater has a small footprint, and weighs just 500 lbs.,** so it can be handled without an autocar, and hauled in a truck. Super Freez-Fiter is also easy to install. It requires just input and output gas connections, and an electrical source for preheating the unit's heaters.

Super Freez-Fiter can be started with 12 volt DC or 120 volt AC. It is for use in Class I, Division 1 or Division 2, Group D locations and has FM, CSA and ATEX certification.

**The Super Freez-Fiter pipeline heater is ruggedly constructed,** with a stainless steel body, stainless steel serpentes, and a galvanized skid. It requires very little maintenance and is easy to service. It also has great "environmentals", there is no open flame or ethylene glycol, virtually no NO<sub>x</sub> or VOCs – and no complaint-producing "firtube roar!"

**Super Freez-Fiter is the ultimate in pipeline freeze protection for low volume flow applications.** Designed as a manual system, units can also be manufactured as a fully automatic system with an Allen-Bradley FlexLogix PLC. Gauges, regulators, and high-temp shut-down instrumentation are all built-in.

**Factory  
Mutual  
System**

Approved



Certificate number:  
ZB3 07 ATEX 006  
Protection mark:  
CE 1418 © 12 G (Propane, Butane, Methane)

Certificate number:  
ZB3 Nr. Ex-07. Y. 007  
Protection mark:  
CE 1418 © 12 G (Propane, Butane, Methane)